

## Waveguide Isolators

Part Number: KTWI320-12.7L1

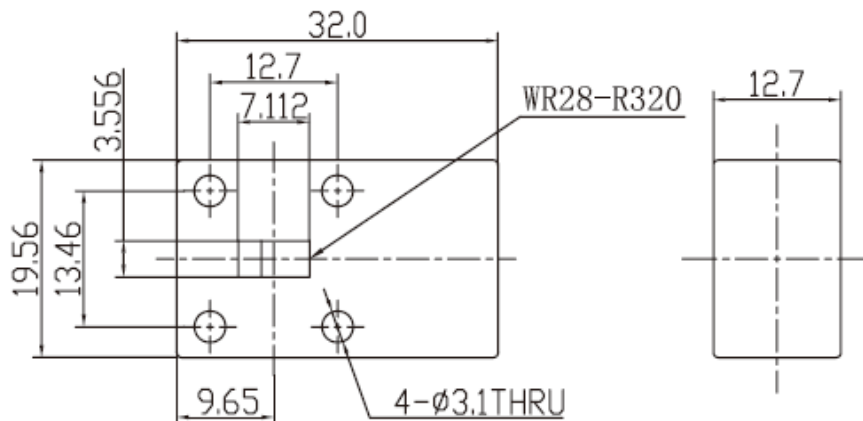
### Key Features

- Broad Frequency Range: 26.4GHz - 40.1GHz
- High Isolation, Low Insertion Loss, Small Size
- Wide Operating Temperature Range : -40°C~+85°C
- Commercial, Military and Space Applications

### Electrical Specifications at Room (25°C±5°C) Temperature

Part Number	Freq. Range (GHz)	Bandwidth Max. (MHz)	Insertion Loss Max. (dB)	Isolation Min. (dB)	VSWR Max.	Waveguide Type
KTWI320-12.7L1	26.4 - 40.1	3000	0.4	20	1.25	WR28

### Mechanical Dimensions (mm)



### HOW TO ORDER

