

Waveguide Isolators

Part Number: KTWI220-9.5

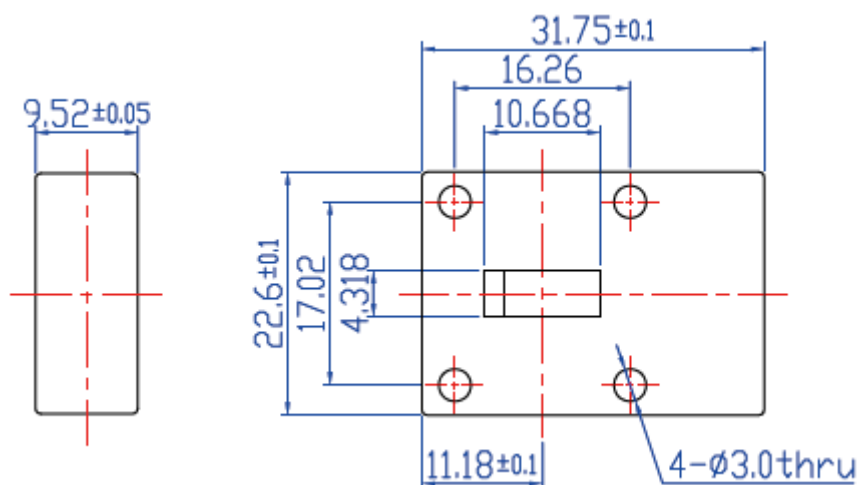
Key Features

- Broad Frequency Range:17.6GHz - 26.7GHz
- High Isolation, Low Insertion Loss, Small Size
- Wide Operating Temperature Range : -40℃~+85℃
- Commercial, Military and Space Applications

Electrical Specifications at Room (25℃±5℃) Temperature

Part Number	Freq. Range (GHz)	Bandwidth Max. (MHz)	Insertion Loss Max. (dB)	Isolation Min. (dB)	VSWR Max.	Waveguide Type
KTWI220-9.5	17.6 - 26.7	1000	0.3	20	1.20	WR42
KTWI220-9.5	17.6 - 26.7	2000	0.4	18	1.30	WR42

Mechanical Dimensions (mm)



HOW TO ORDER

