

Waveguide Isolators

Part Number: KTWI180-15A

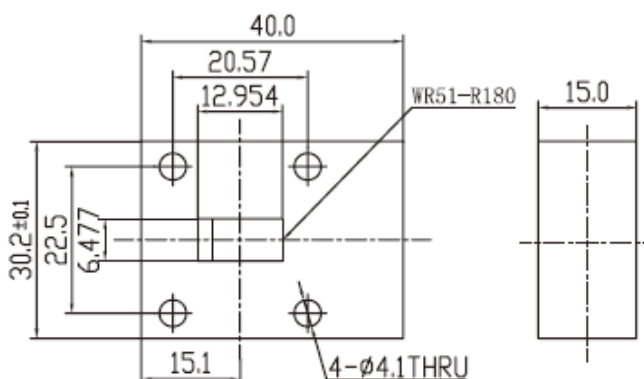
Key Features

- Broad Frequency Range: 14.5GHz - 22.0GHz
- High Isolation, Low Insertion Loss, Small Size
- Wide Operating Temperature Range: -40°C~+85°C
- Commercial, Military and Space Applications

Electrical Specifications at Room (25°C±5°C) Temperature

Part Number	Freq. Range (GHz)	Bandwidth Max. (MHz)	Insertion Loss Max. (dB)	Isolation Min. (dB)	VSWR Max.	Waveguide Type
KTWI180-15A	14.5 - 22.0	1000	0.3	23	1.20	WR51
KTWI180-15A	14.5 - 22.0	2000	0.4	20	1.25	WR51

Mechanical Dimensions (mm)



HOW TO ORDER

