

Waveguide Isolators

Part Number: KTWI140-12.7

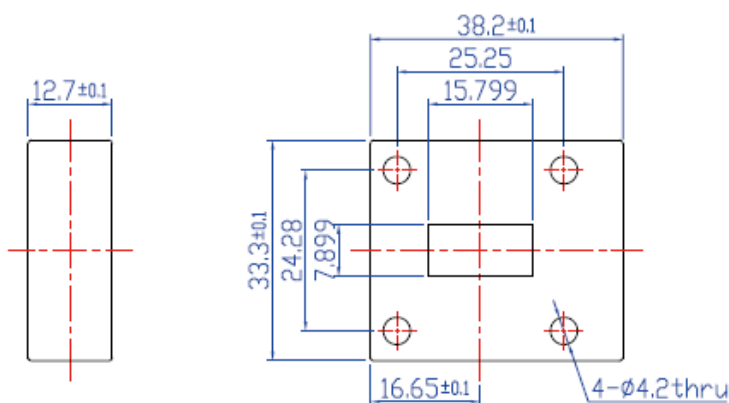
Key Features

- Broad Frequency Range: 11.9GHz - 18.0GHz
- High Isolation, Low Insertion Loss, Small Size
- Wide Operating Temperature Range: -40°C~+85°C
- Commercial, Military and Space Applications

Electrical Specifications at Room (25°C±5°C) Temperature

Part Number	Freq. Range (GHz)	Bandwidth Max. (MHz)	Insertion Loss Max. (dB)	Isolation Min. (dB)	VSWR Max.	Waveguide Type
KTWI140-12.7	11.9 - 18.0	500	0.3	23	1.15	WR62
KTWI140-12.7	11.9 - 18.0	1000	0.4	20	1.20	WR62

Mechanical Dimensions (mm)



HOW TO ORDER

