

## Surface Mount Isolators

Part Number: KTSI-902C1

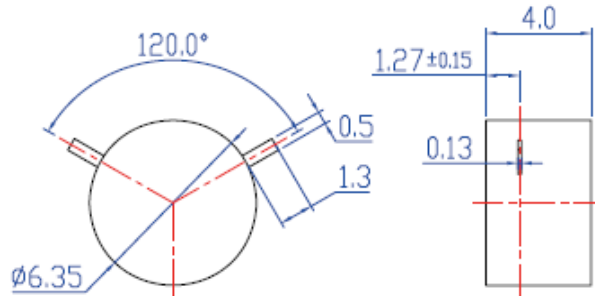
### Key Features

- Vibration Resistance, Shock Resistance
- Compact Structure, Small Size
- High Frequency Characteristic
- High Production Efficiency
- Operating Temperature Range: -15°C~+60°C
- Widely Used in All Kinds of Base Stations, Small Power Amplifier etc.

### Electrical Specifications at Room (25°C±5°C) Temperature

Part Number	Freq. Range (GHz)	Bandwidth Max. (MHz)	Insertion Loss Max. (dB)	Isolation Min. (dB)	VSWR Max.	Load Power (W)	Connector Type
KTSI-902C1	8.8 - 10.2	full	0.5	20	1.25	0.5	SMD
KTSI-902C1	10.35 - 10.55	full	0.5	20	1.25	0.5	SMD

### Mechanical Dimensions (mm)



### HOW TO ORDER

