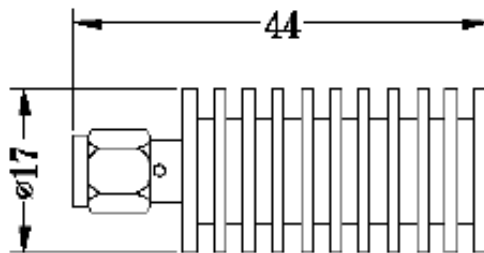


SMA , DC-18GHz, 10W

Electrical Specifications

- ◇ **Nominal Impedance:** 50 Ω
- ◇ **Power Rating:** 10W
- ◇ **Connector Type:** SMA(Male)
- ◇ **Operating Temperature:** -55°C ~ +125°C
- ◇ **RoHS Compliant**

Outline Drawing (mm)



Part Number	Frequency Range(GHz)	VSWR (Max.)	Dimensions (mm)	Weight (g)
CT50-10-S-6	DC-6	1.20	Φ 17 x 44	16
CT50-10-S-12.4	DC-12.4	1.25		
CT50-10-S-18	DC-18	1.30		

Notes:

1. Input power shall meet the requirements of the power derating.
2. General peak power 10 times rated power (5μs pulse width, 1% duty cycle).